

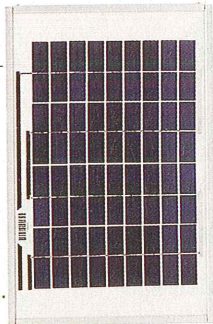
# SHORTLIST

## SOLAR PANELS

### AMERESCO

Ameresco solar panels are a continuation of the previous BP Solar range. They have toughened glass covering and heavy-duty aluminium frames. Being monocrystalline in design, they have impressive output and are known to be good solid performers over a long lifetime.

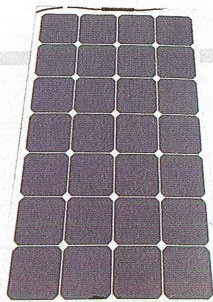
- £12.95-£299.95
- [marlec.co.uk](http://marlec.co.uk)



### SELECT SOLAR

The Select Solar Flexible range boasts one of the highest efficiency cells, with efficiency levels up to 21.5%. The high performance monocrystalline cells are encapsulated between EVA and TPT layers, giving excellent durability.

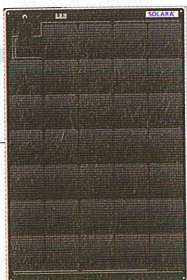
- £120-£276
- [selectsolar.co.uk](http://selectsolar.co.uk)



### SOLARA M

Solara M panels are designed using a salt and acid resistant Teflon-coated EVA/ETFE laminate, which is extremely robust. The panel features 36 crystalline high-performance cells to transform as much sunlight as possible, and is less than 5mm thick. The panel face is dimpled to receive light from several angles.

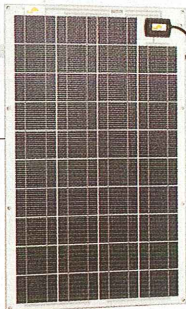
- £238-£906
- [selectsolar.co.uk](http://selectsolar.co.uk)



### SUNWARE 20 SERIES

These German-made PV panels are 100% waterproof and saltwater resistant, and come with a lightweight, aluminium backing plate. At 5mm thick, they have a 3m-long pre-connected output cable and can be screwed or glued to the deck. These 39 and 40-cell panels are highly efficient.

- £10-£695 £71.51-£130.91
- [shop.solar-wind.co.uk](http://shop.solar-wind.co.uk)



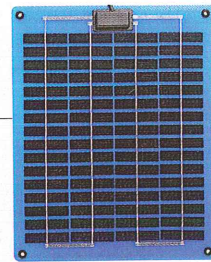
## MORE SHORTLISTS

We keep this and similar lists bang up to date online at [sailingtoday.co.uk](http://sailingtoday.co.uk)

### SPECTRA

Robustly constructed with a GRP backing, these panels can be flexed (1cm over 30cm) and are durable enough to be walked on. The polycrystalline cells are encapsulated between clear, scratchproof outer layers and a sealed junction box houses a blocking diode that prevents reverse current flow at night.

- £62.95-£249.95
- [force4.co.uk](http://force4.co.uk)



### ALPEX

Alpex panels are well constructed in a heavy duty anodised aluminium box designed to withstand harsh conditions over a long period of time. Anti-reflective, coated glass improves light transmission to the cells.

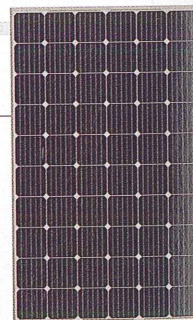
- £35-£250
- [marlec.co.uk](http://marlec.co.uk)



### YINGLI

High quality Yingli polycrystalline, rigid-framed solar panel kits come in a wide range of sizes and power outputs. Kits include a solar panel, 10A EPHC charge controller, 3m-long output cables and fused battery connectors. Reverse leakage protection prevents power loss at night.

- £110-£500
- [selectsolar.co.uk](http://selectsolar.co.uk)



### NASA

Though just 3.5mm thick, Nasa's 12V semi-flexible panels are robustly constructed on a GRP substrate and protected by a scratch-proof Tedlar polymer. The polycrystalline cells are encapsulated between two tough outer layers so it is weatherproof and can be walked on.

- £71.51-£130.91
- [nasamarine.com](http://nasamarine.com)

